

1. Switch On

Turn on the device by pressing the **Power button** 2s. The infrared image comes on, stays on, and the LED indicator is lighted on.

2.Switch Off

The camera will be switched off by long pressing the **Power button** and release the button when the count down timer change from 3 to 0.

3. Standby Mode

When the device is on, short press the **Power button** to enter the standby mode with indicator light flickering. Short press the **Power button** again to wake up the device from the standby mode to the normal mode.

4. Eyepiece Adjustment

The eyepiece adjustment can help user to get the clearest image for different eye conditions.

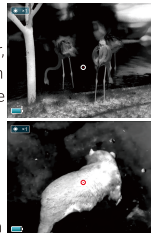
5. Switch the Image Mode

Short press the **Image Mode button** to switch the image mode from white hot, black hot, red hot, pseudo color, target highlight mode circularly.



6.Laser Indicator

Long press the **Image Mode button** to call out laser indicator, meanwhile the cursor shows on the display screen indicating the position of 50 meters away.



Long press the **Image Mode button** again to turn off the laser function, and the cursor is changed to the user cursor. Then users can adjust the cursor position through the cursor calibration function in the menu.

Long press the **Image Mode button** again to close the user cursor.

7. E-Zoom

Short press the **E-zoom button** for image zooming from 1×2×4× circularly.

×2/×4

8. Photographing / Video recording

In the home screen, short press the **Photo button** to take photos.

Long press the **Photo button** to start a video recording. Then a video time prompt box appears in the upper-right corner.



Long press the **Photo button** again to quit and save the video.

COMPONENTS & CONTROLS



9. Stadiametric Rangefinder

Long press the **E-zoom + Image Mode** buttons to turn the stadiametric rangefinder mode on/off. Then adjust the selecting rang of the target with a short or long press of the **Image Mode button / Photo button**.

The distance of human (1.7m target), wild boar (0.9m target) and hare (0.2m target) can be measured and displayed behind the corresponding icon.



10. Main Menu

Long press the **E-zoom button** to enter the main menu interface. Then short press the **Image mode / Photo button** to toggle up or down, and short press the **E-zoom button** to perform following settings: Ultraclear / Wi-Fi / Display Brightness / Image Contrast / Image Sharpness / Image Hue / PIP and More. When done, long press the **E-zoom button** to exit the menu.



11. Ultraclear Mode

In this mode, the image contrast is enhanced, which is suitable for cloudy, rainy, foggy and other harsh weather conditions.

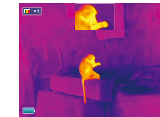
12. WiFi Function

Turn on WiFi in the main menu, and connect the phone to the WiFi signal that names Eye_xxxx-xxxxx, xxxxx-xxxxx is the SN code of the device, and the password is 12345678.

After the WiFi connection is successful, the APP installed on the phone can be used for real-time operations, such as taking photos and recording videos.

13. Image Hue Selection

There are two hues for selections: C (cool) hue and W (warm) hue. Short press the **Menu button** to switch between C and W. But the switch between the warm and cool hues is not applicable to the Color mode.



14. Picture in Picture (PIP)

When the PIP function is turned on, a small window appears at the top center of the screen, showing a double zoom of the center area of the target image.

15. More

In the main menu, select the More icon and short press the **E-zoom button** to enter the submenu, including functions of Calibration Mode / Auto-standby / Cursor Calibration /System Information/ Factory Resets / Return to the main menu, etc.



16. Calibration Mode

Image degradation can be improved by manual calibration. There are two mode available - B (background) and S (shutter), which can be switched in the main menu.

Press and hold down the **E-zoom + Photo** buttons at the same time to achieve the manual calibration. If the mode B is selected, the lens cover shall be closed before the calibration.

17. Auto Standby

When the standby function is on, the device will automatically enter the standby state with no operation within 15 minutes, and power off automatically after 15 minutes in the standby state.

Note: When Wi-Fi, recording or video output function is on, it will not automatically standby.

18. Cursor Calibration

In the reticle calibration interface, short press the **Image Mode / Photo button** to move the reticle position and press the **E-zoom button** to switch the movement direction. When done, long press the **E-zoom button** to save and exit.



19. Bad Pixel Correction

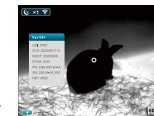
In the bad pixel correction interface, press the **Image Mode / Photo button** to move the cursor position to the bad pixel and short press the **E-zoom button** to switch the movement direction.

When the cursor is centered to the bad pixel, short press the **Power button** to add and correct the bad pixel, and short press the **Power button** again in the same position to cancel correction. Long press the **Power button** to delete all of the added bad pixels. When done, long press the **E-zoom button** to save and exit.



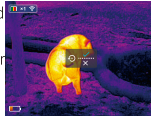
20. System Information

Select the system information option and press the **E-zoom button** to view all version information and product codes.



21. Factory Resets

Select the factory reset option and press the **E-zoom button** to show the selection box. Select ✓ (Yes) or × (No) with a short press of the **Image Mode / Photo button**.



Press the **E-zoom button** briefly to confirm your selection. If Yes is selected, the following settings will be restored to the factory state:

Image Mode - white hot,
Brightness - level 3,
Sharpness - level 2,

E-zoom - ×1,
Contrast - level 2,
Image Hue - W

Calibration Mode - S, and the other functions are off.

Note: Restore factory settings will format memory, so please save the date in advance.

22. Data Catching

After connecting the device with the computer via USB cable, the memory of the device can be read on the computer.

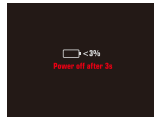
23. Charge

When the indicator light is flashing red, it means the battery is less than 10%, please charge in time. At the same time, there will be relevant text prompts on the screen.

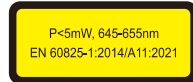
Open the USB cover at the bottom, plug in the USB charging cable, and connect with the power to charge, you can also charge with the power adapter or any other power supply such as portable power.

The indicator light is orange when charging and green when full.




When the warning indication of power less than 3% appears on the display screen, if the device is not charged in time, the device will automatically shut down after 3s.



WARNING!



Eye II V3 Series

Model			
	E3max V3	E6+ V3	E6Pro V3
Detector Resolution	384×288	640×480	
Pixel Size, um	12		
Sensor NETD, mk	≤25 (25 °C, F#=1.0)		
Frame Rate, Hz	50		
Objective Lens, mm	35	50	
Field of View	7.5°×5.7°	12.5°×10.0°	8.8°×7.0°
Display	1024×768 OLED		
Laser*, nm	650		
Magnification,x	3.4 ~ 13.6	2.0 ~ 8.0	2.9 ~ 11.6
E-zoom, x	2/4		
Max. Battery Life**, h	6		
Operating Temp., °C	-20 ~ 50		
Weight, g	<450		<520
Dimension, mm	188×65×64		202×65×64
Detection Range, m (Target:1.7m×0.5m, P(n)=99%)	1818		2597

* The laser and cursor function may be disabled due to the legal restrictions in your countries and regions.

** Actual operation time depends on the intensity of Wi-Fi use and the built-in video recorder.

❖ Technical parameters of the device may be improved without prior notice of the customer.

ATTENTION

1. The rated charging voltage of this product is 5V, please charge timely when power is low, so as to avoid the service life loss caused by battery over-discharge.
2. The thermal imager is not recommended to use in high-temperature environment for a long time, if the temperature is too high, the imager will enter the high-temperature protection state, and automatically shut down.
3. The use of temperature is recommended at -10°C to +50°C. Otherwise, the service life of the product will be affected.
4. Make sure that the USB/MCX port cover on the bottom of the thermal imager is tightly plugged firstly when using in water environment, such as rainy days.
5. Under any circumstances (whether on or off), do not expose the thermal imager directly into the high-intensity radiation sources (such as the sun, laser, etc.), to avoid irreversible damage to the device.
6. The B correction mode will reduce the frequency of automatic shutter correction after the condition of the device become stable. If the image gets worse, please cover the lens cover for manual background correction.
7. When the device is not used for a long time, it should be charged at least 2 months during storage and stored in a dry and ventilated environment.
8. Do not shine the laser pointer on human eyes.
9. The laser and cursor function depends on the legal restrictions of different countries and region.
10. Do not be charged in an environment above 40°C.

Eye II V3 Series

THERMAL MONOCULAR

QUICK START GUIDE

2023.08
V2.0

